

```

Public Function ResolveJoinSearch(ByVal JoinResolution As _
String, ByVal centry As CSEntry, ByVal rgmentry() As _
MVEEntry, ByRef imventry As Integer, ByRef MVOBJECTCLASS As _
String) As Boolean Implements _
IMASynchronization.ResolveJoinSearch
ResolveJoinSearch = False
ResolveJoinSearch = True
Case "cd:MVP#2"
Select Case JoinResolution
Case "cd:MVP#2"
'Note that the case matches with the rule name in the GUI
Dim Highscore as Integer, NewScore as Integer
Dim HighIndex as Integer, index as Integer
For Each mentry In rgmentry
NewScore = CalcScore(mventry)
If NewScore > HighScore Then
HighScore = NewScore
HighIndex = index
End If
index = index + 1
Next
If HighScore > 50 then
ResolveJoinSearch = True
imventry = HighIndex
End If
Case Else
Throw New EntryPointNotImplementedException
End Select
End Function

```

```

Public Sub MapAttributesForJoin(ByVal FlowRuleName As String, _
ByVal centry As CSEntry, _
ByRef values As ValueCollection) _
Implements IMASynchronization.MapAttributesForJoin
Select Case FlowRuleName
Case "FullName->GivenName"
'Note that the case matches with the rule name in the GUI
values.Add(ExtractFirstName(centry("FullName").Value))
Case Else
Throw New EntryPointNotImplementedException
End Select
End Sub

```

Object Creation in ILM

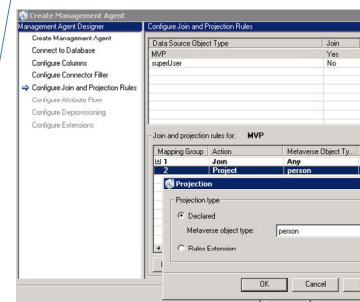
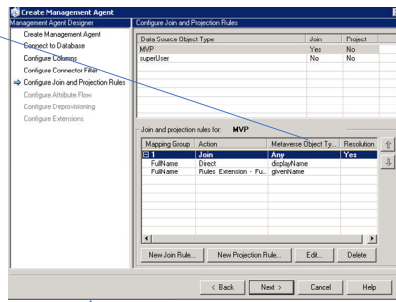
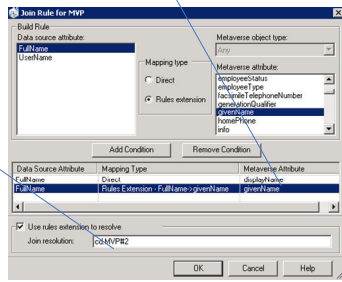
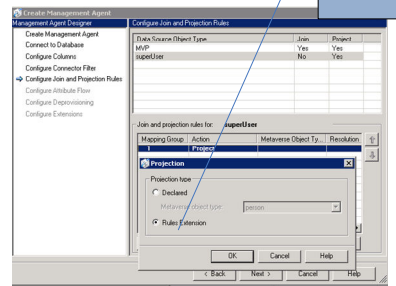
This option indicates if a new object should be created in ILM when the Relationship Criteria is not satisfied for an object in the Connected System Scope.

Create object in ILM

```

Public Function ShouldProjectToM
CSEntry, ByRef MVOBJECTCLASS As String
Implements IMASynchronization.ShouldProjectToM
MVOBJECTCLASS = centry("EmploymentType")
Return True
End Function

```



Relationship Criteria

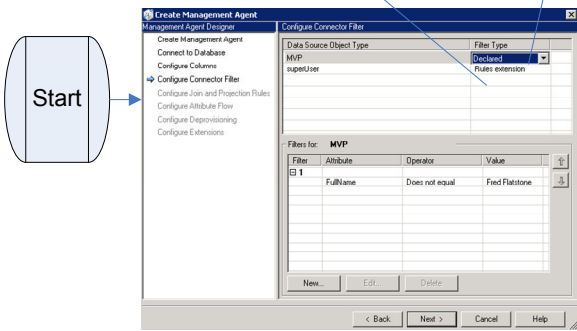
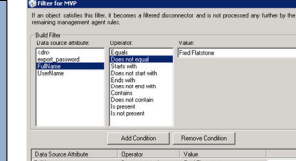
Relationship Criteria is a set of conditions that identify objects in ILM and objects in the Connected system that are related to each other.

Add Condition	Delete Condition
<input type="checkbox"/> MetaverseObject:person(Attribute)	= ConnectedSystemObject:user(Attribute)
<input type="checkbox"/> accountName	= sAMAccountName

```

Public Function FilterForDisconnection(ByVal centry As _
CSEntry) As Boolean Implements _
IMASynchronization.FilterForDisconnection
Return centry("DisplayName").IsPresent And Also Not _
IsValidUser(centry("DisplayName").value)
End Function

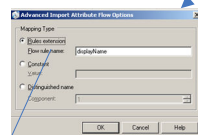
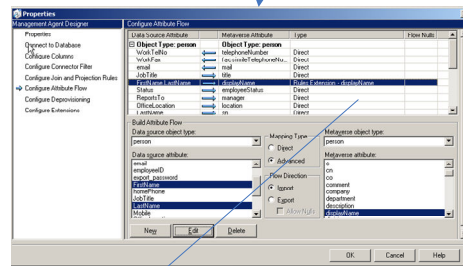
```



Inbound Attribute Flow

Specify the attributes and values to flow from the connected system to Identity Lifecycle Manager.

New Attribute Flow	Delete Attribute Flow
<input type="checkbox"/> Initial Flow Only	<input type="checkbox"/> Flow(Connected System Attributes/Values => ILM Attribute)
<input type="checkbox"/>	<input type="checkbox"/> sAMAccountName => accountName
<input type="checkbox"/>	<input type="checkbox"/> displayName => displayName
<input type="checkbox"/>	<input type="checkbox"/> sn => lastName
<input type="checkbox"/>	<input type="checkbox"/> givenName => firstName
<input type="checkbox"/>	<input type="checkbox"/> mail => mail
<input type="checkbox"/>	<input type="checkbox"/> mailNickname => mailNickname
<input type="checkbox"/>	<input type="checkbox"/> DateTimeFormat["12/1/2008 2:00:31.435 AM", "Y-M-D dd dddd..."]



```

Public Sub MapAttributesForImport(ByVal FlowRuleName As String, ByVal centry As _
CSEntry, mentry As MVEEntry) As Boolean Implements _
IMASynchronization.MapAttributesForImport
Select Case FlowRuleName
Case "displayName"
'Note that the case matches with the rule name in the GUI
mentry("displayName").Value = _
centry("FirstName").Value & " " & _
centry("LastName").Value
Case Else
Throw New EntryPointNotImplementedException
End Select
End Sub

```

Metaverse Object Type

This is the object type in ILM that this Synchronization Rule applies to.

Connected System

This is the system that a relationship with ILM will be created for.

Connected Object Type

This is the object type in the Connected System that this Synchronization Rule applies to.

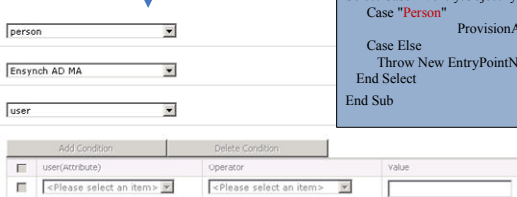
Connected Object Scope

Define a filter that identifies the objects in the connected system to which this synchronization rule will be applied.

Object Creation in Connected System

This option indicates if a new object should be created in the Connected System when the Relationship Criteria is not satisfied for an object in ILM.

Create object in connected system



```

Public Sub Provision(mventry As MVEEntry) As Boolean Implements _
IMVSynchronization.Provision
'This code may result in the creation of objects - which will cause this code to be called again.
Select Case mventry.ObjectType
Case "Person"
ProvisionAD
Case Else
Throw New EntryPointNotImplementedException
End Select
End Sub

```

